

A decorative graphic consisting of numerous circles of various sizes and colors (red, orange, purple, blue, and teal) arranged in a loose, abstract pattern around the central text.

# Coopselios **Group**

Over **30 years** of experience in project design, research and innovation

Reggo Emilia, January 2023



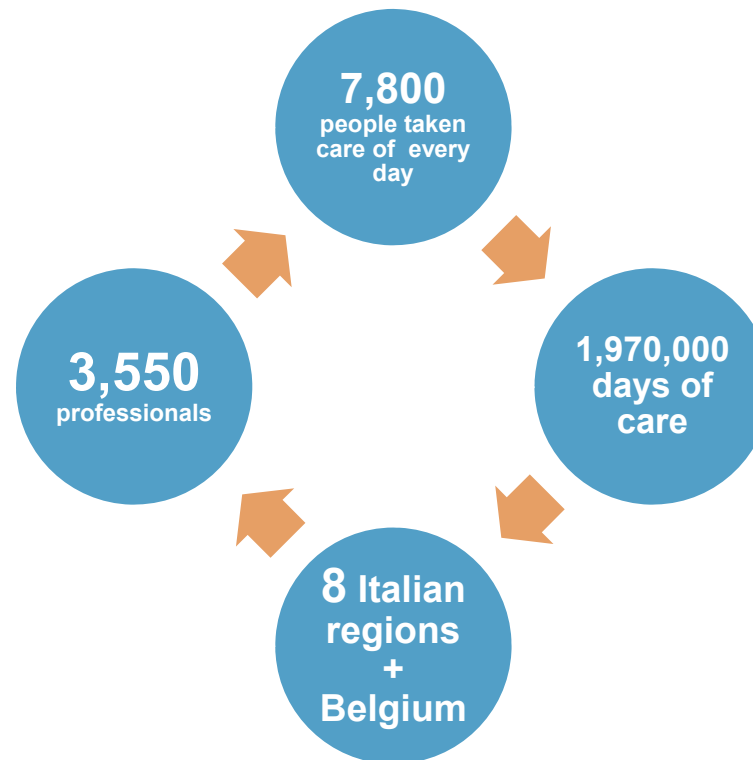
**We are a Social Cooperative**  
**We do Social Impact**



Coopselios is a leading social cooperative specialising in **personal care services**. Thanks to our thirty-year long experience we offer public institutions and private citizens **advanced solutions** to meet their social and welfare, educational and healthcare needs. Coopselios designs and runs homes for the elderly, healthcare and welfare residences, day care centres, home care services, rehabilitation centres, nursery schools, kindergartens, and play centres.



Coopselios Headquarter  
in Reggio Emilia - Italy



# 2022 Coopselios Group Highlights

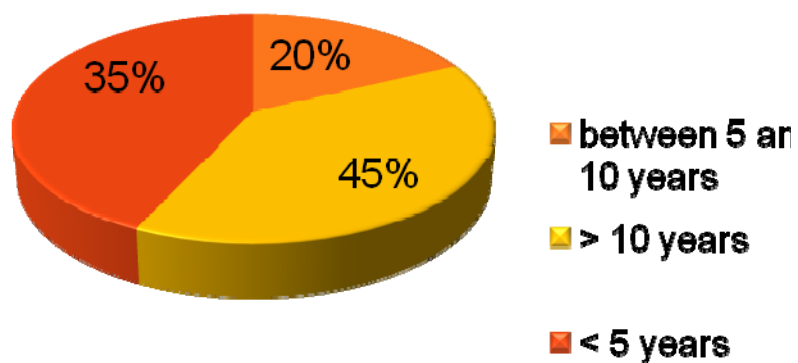


- ✓ **126 million Euros of Turnover**
  - ✓ **42 million Euros of Equity**
  - ✓ **20 million Euros of durable Investments over the last three years**
  - ✓ **10 million Euros of durable Investments estimated over the next 2 years**
- 

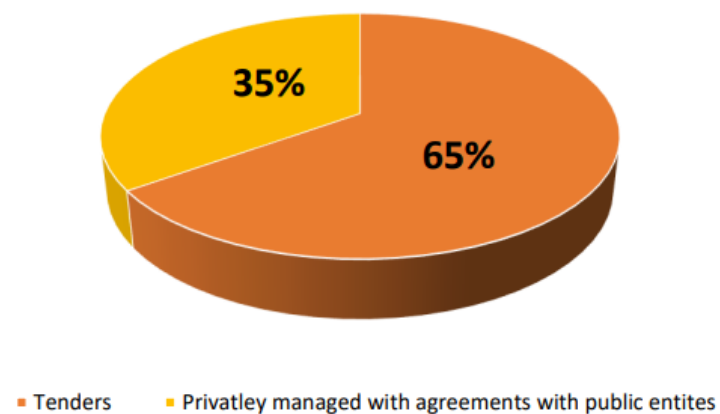
# 2022 Coopselios highlights

Own funds (figures in Euro)		
Equity 42,174,306	Reserves 40,154,809	Equity to fixed assets ratio 1.45 (dato del 2018)

## Revenue broken down by residual duration of contracts



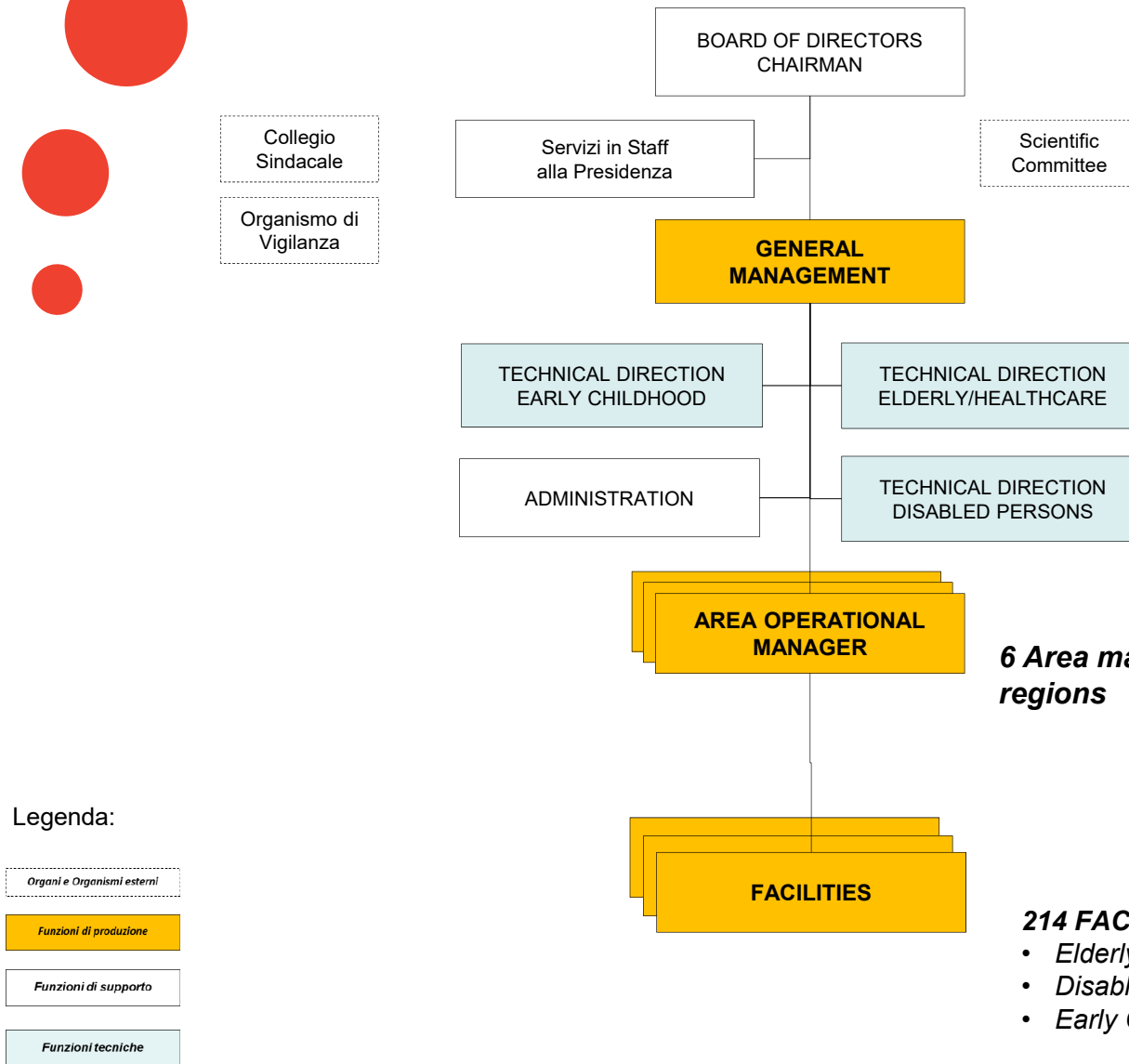
## Revenue broken down by Business segment



# Mission e governance structure

## Mission

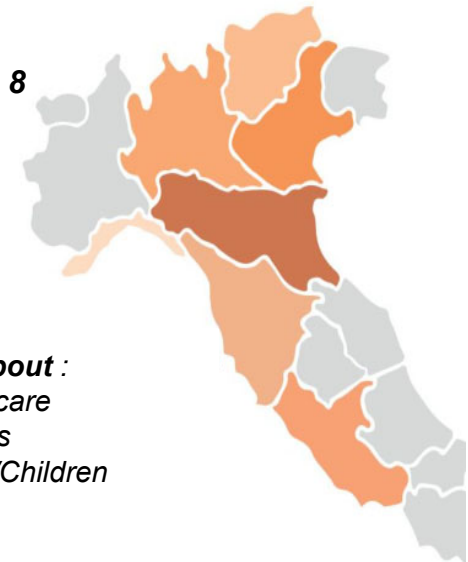
People are the core of the Cooperative philosophy. Respect for the individual and attention to vulnerable groups of the population are the drivers of the Cooperative actions.

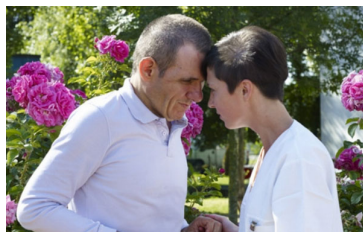


**6 Area manager in 8 regions**

**214 FACILITIES about :**

- Elderly & Healthcare
- Disabled persons
- Early Childhood/Children





Disabled  
Persons –  
*Disabili*



Early  
Childhood/  
Children –  
*Infanzia*



Elderly &  
Healthcare -  
*Anziani*

**214 Facilities in 8 all  
over the country**

#### LOMBARDIA

##### ANZIANI

10 RESIDENZE SANITARIE ASSISTENZIALI  
3 ALLOGGI, MINI ALLOGGI, CENTRI  
DIURNI

##### INFANZIA

1 NIDO/SCUOLA BILINGUE  
2 NIDI

#### TRENTINO

##### INFANZIA

2 NIDI - CENTRI INFANZIA

#### VENETO

##### ANZIANI

5 CENTRI SERVIZI ANZIANI

##### DISABILI

1 RESIDENZE SANITARIE PER DISABILI

##### INFANZIA

6 NIDI

#### EMILIA ROMAGNA

##### ANZIANI

33 SERVIZI DI ASSISTENZA DOMICILIARE  
15 CASE RESIDENZE ANZIANI  
8 CENTRI DIURNI  
1 CASA PROTETTA  
2 RESIDENZE SANITARIE ASSISTENZIALI  
1 COMUNITÀ ALLOGGIO

##### DISABILI

6 SERVIZI INTEGRAZIONE SCOLASTICA  
17 CENTRI SOCIO RIABILITATIVI DIURNI  
E/O RESIDENZIALI  
6 SERVIZI TERRITORIALI

##### INFANZIA

26 NIDI  
3 SPAZI BAMBINI  
1 ATTIVITÀ POMERIDIANE  
1 CENTRI DI SPERIMENTAZIONE  
12 SERVIZI INTEGRATIVI  
4 SCUOLE DELL'INFANZIA  
1 CENTRI GIOCO BAMBINI E GENITORI

##### MINORI

10 CENTRI EDUCATIVI DIURNI E SERVIZI  
EDUCATIVI DOMICILIARI  
7 SERVIZI DI SOSTEGNO PERSONALE E  
FAMILIARI

#### LIGURIA

##### ANZIANI

2 RESIDENZE SANITARIE ASSISTENZIALI  
2 SERVIZI DI ASSISTENZA DOMICILIARE

##### DISABILI

1 SERVIZI DI ASSISTENZA SCOLASTICA  
1 CASA APERTA  
2 RESIDENZE SANITARIE PER DISABILI  
1 SERVIZIO SEMIRESIDENZIALE

##### INFANZIA

2 SCUOLE DELL'INFANZIA  
4 SERVIZI INTEGRATIVI ATELIER  
2 SEZIONI PRIMAVERA  
8 NIDI

##### PSICHIATRICO SANITARIO

2 COMUNITÀ TERAPEUTICO  
RIABILITATIVE

##### MINORI

1 SERVIZIO DI SOSTEGNO EDUCATIVO  
TERRITORIALE E SCOLASTICO  
1 CENTRO ANTIVIOLENZA

#### TOSCANA

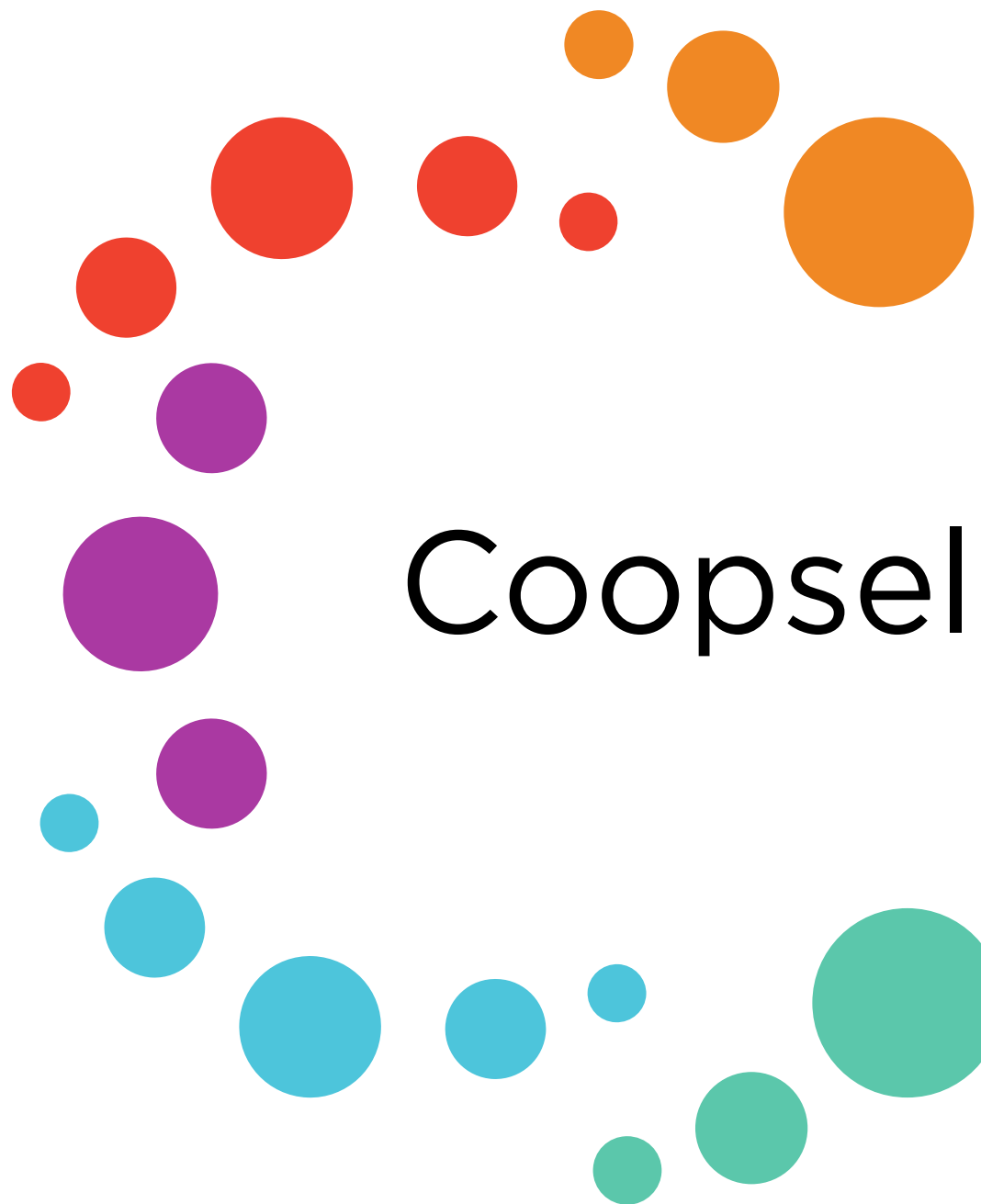
##### ANZIANI

1 CASA RESIDENZA ANZIANI

##### PSICHIATRICO-SANITARIO

1 COMUNITÀ PER GIOVANI ADULTI






# Coopselios **Group**





## The Group

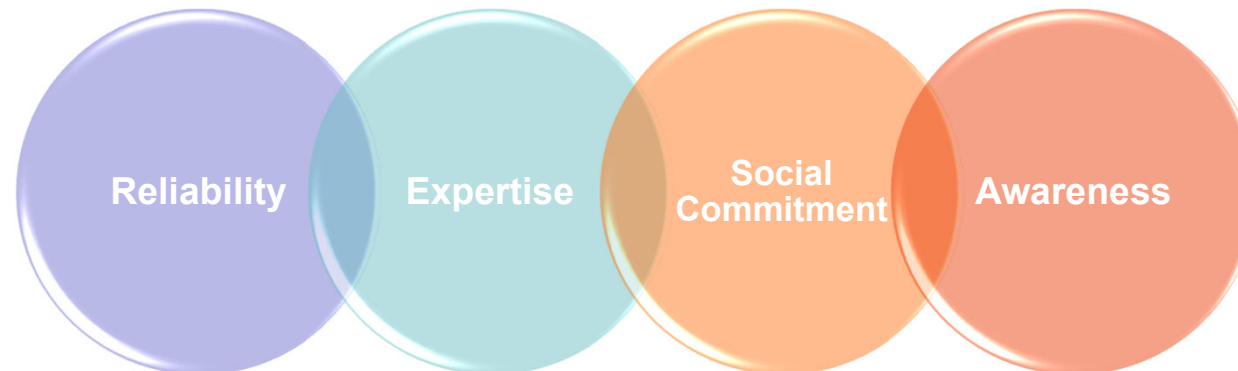


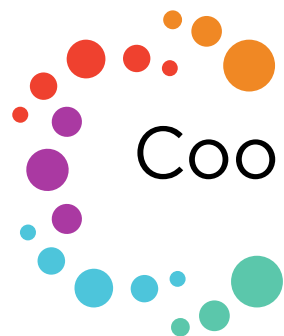
The Coopselios Group is one of the main non-profit players in the welfare sector in Italy with significant and established experiences abroad.

The Coopselios Group is an ecosystem for **welfare and social innovation marked by social**, environmental and economic sustainability. It acts with a cooperative approach by promoting national and international networks for the development of projects with a medium and long term perspective.

## Our Mission

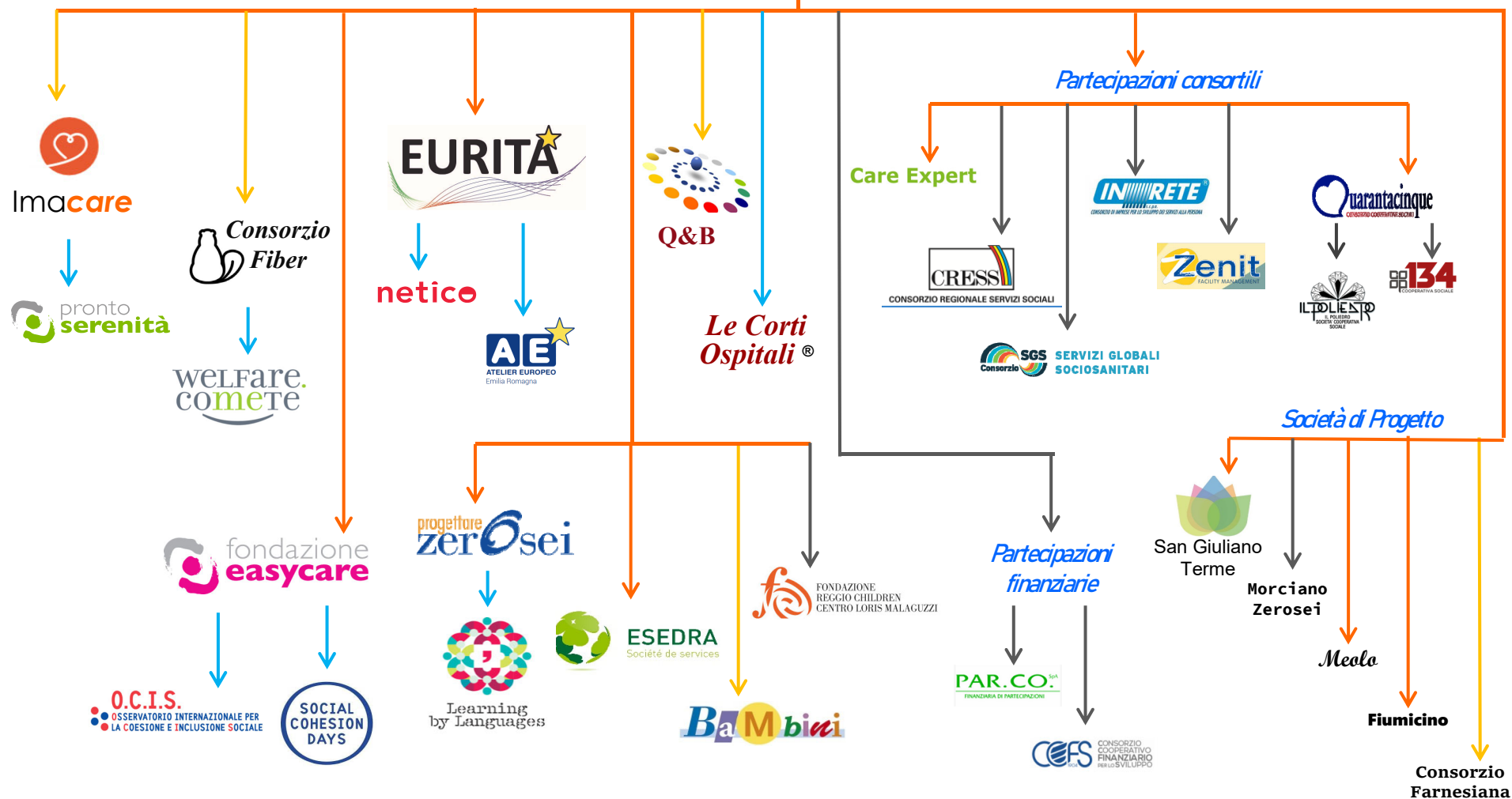
Designing and implementing integrated solutions to care, assistance, education and welfare needs for organisations, enterprises, families and persons in need, frailty, disability for long-term or temporary non-self-sufficiency.





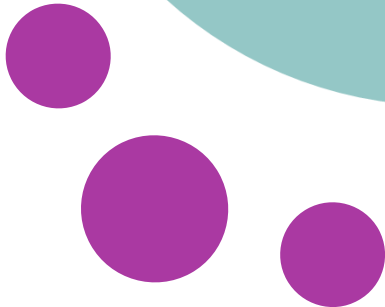
# Coopselios Group

At a glance..



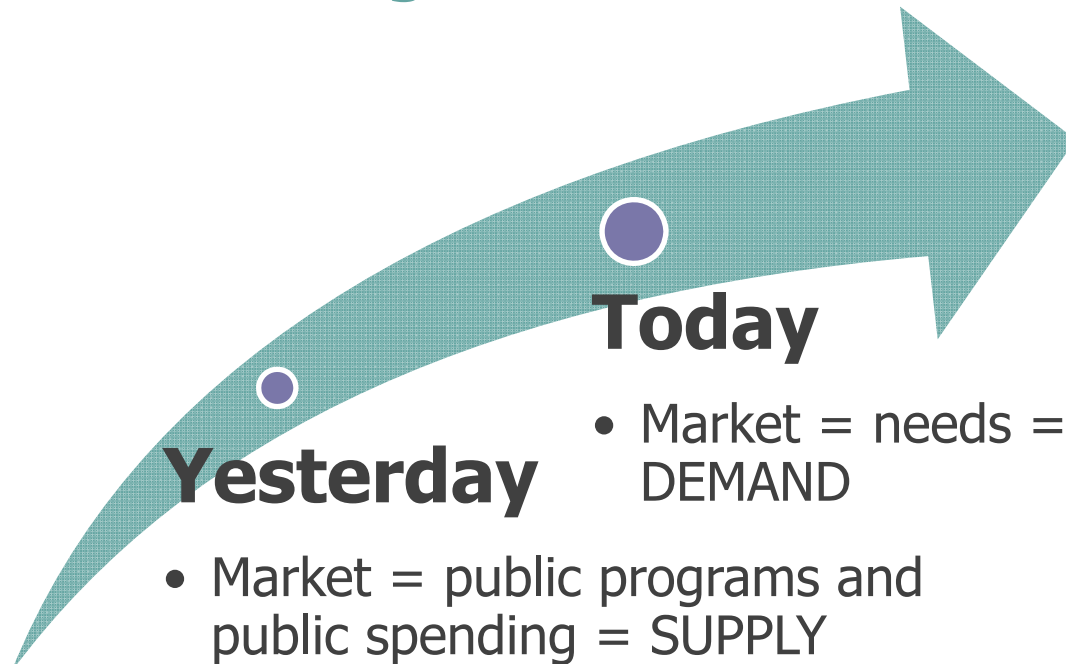
# Networking and International relationships

Coopselios is **Team Leader** in many projects at European and World level.



# Where are we going: the Coopselios Group strategic planning process

## Paradigm inversion



## A new perspective

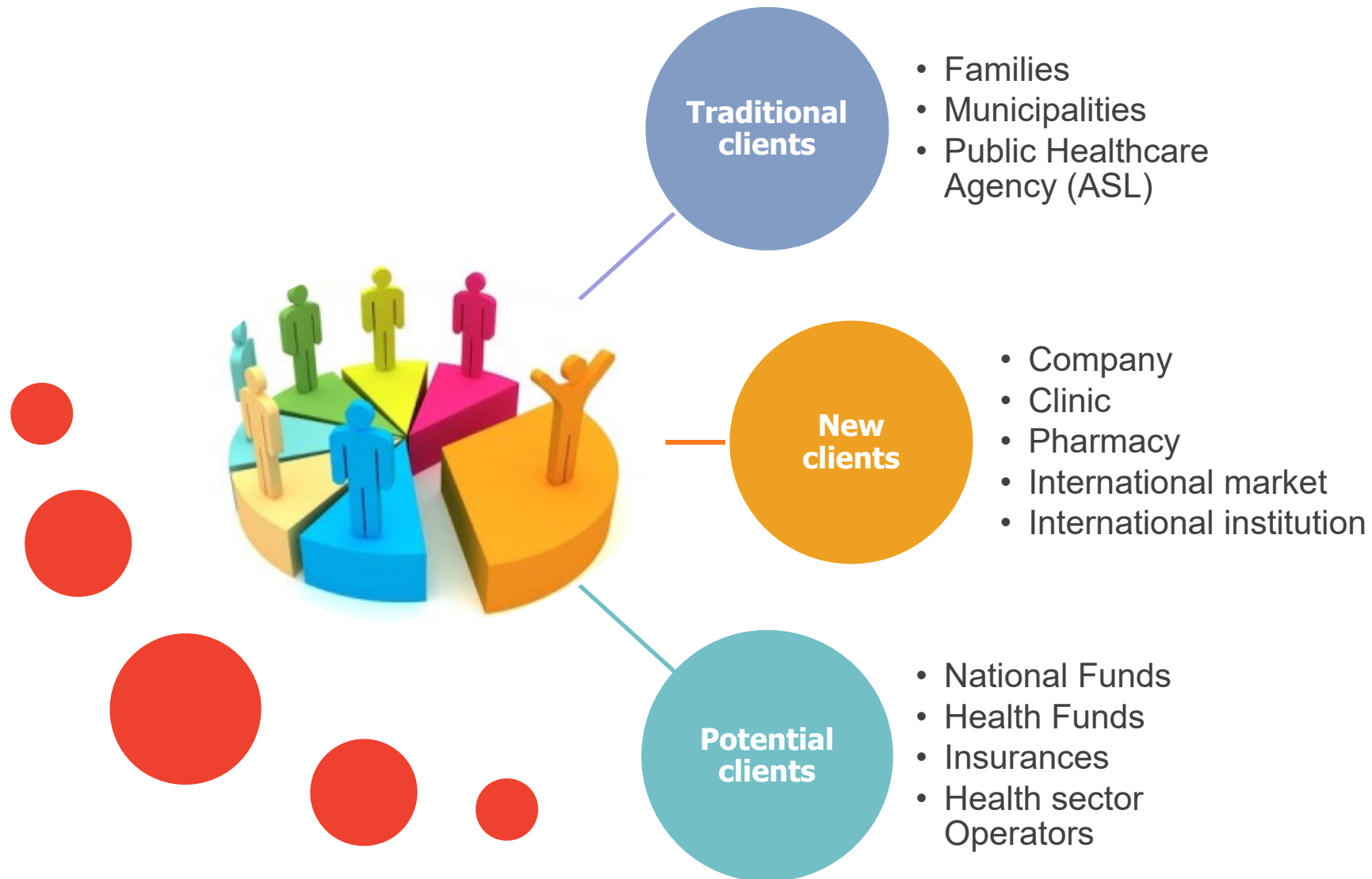
Rather than providing services the purpose is to guarantee advantages, benefits and solutions through them in order to offer an **enhancing human experience** to clients and meet their explicit and latent needs.



# Where are we going: the Coopselios Group strategic planning process



# Where are we going: the Coopselios Group strategic planning process



A decorative graphic consisting of numerous circles of various sizes and colors (red, orange, purple, blue, and teal) arranged in a circular pattern around the central text.

**Thank you for your  
attention**